

## Installation of *SolarVenti Industrial*



The system is delivered in parts to minimize costs. Approx 60 m<sup>2</sup> can be shipped on 1 pallet.

- 1) assemble the frame (not shown here)
- 2) mount the back plate into the frame

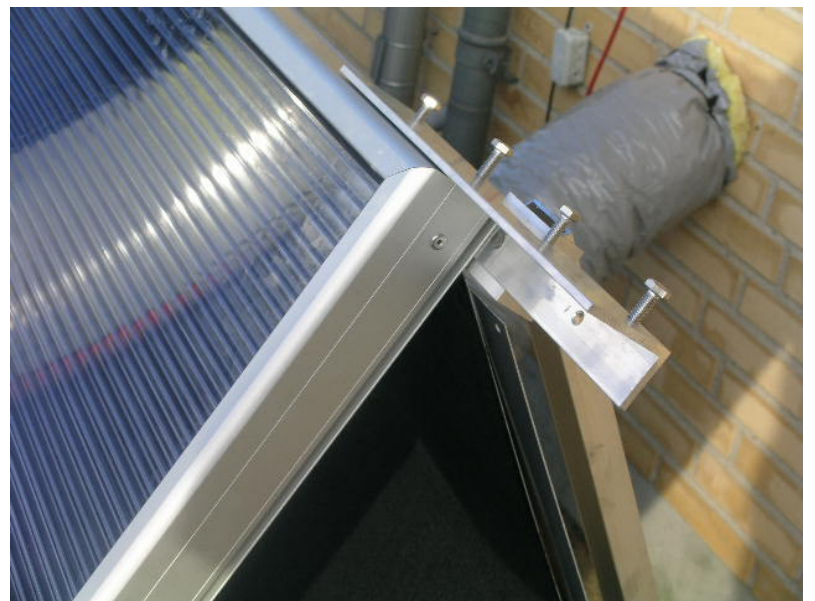
Assembling of the parts



One man can easily carry an element. Mounting can be done by 1 man.











Rubber band between the elements.



Installation completed